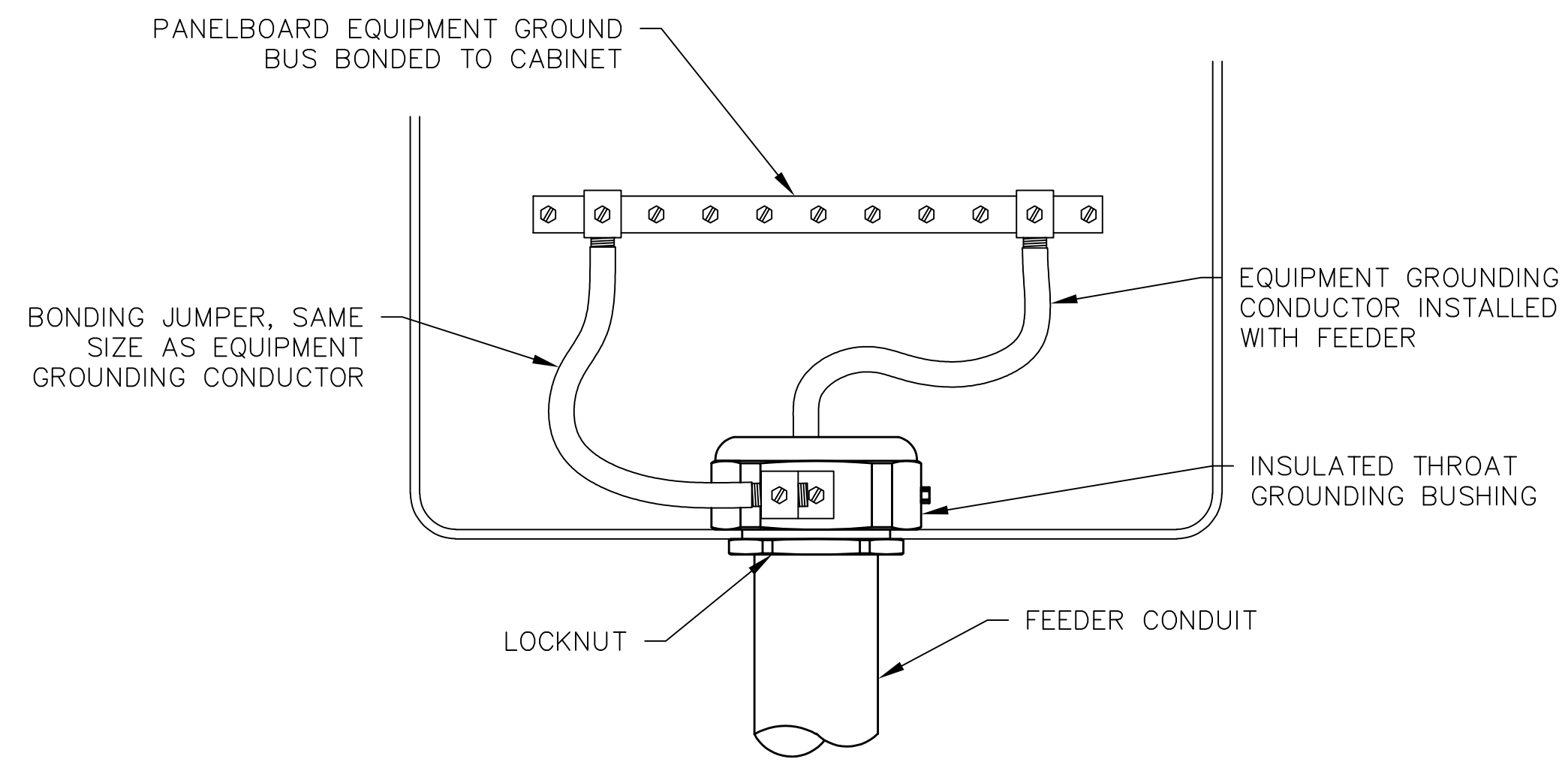
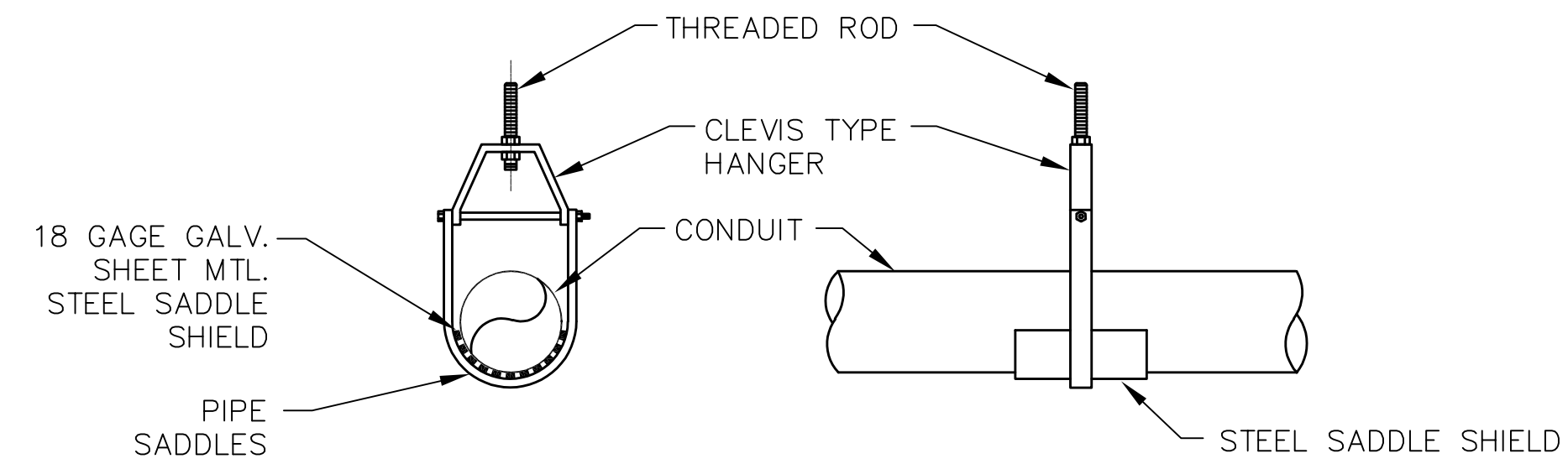


1 SURFACE MOUNT PANELBOARD / CONDUIT DETAIL
SCALE: N.T.S.

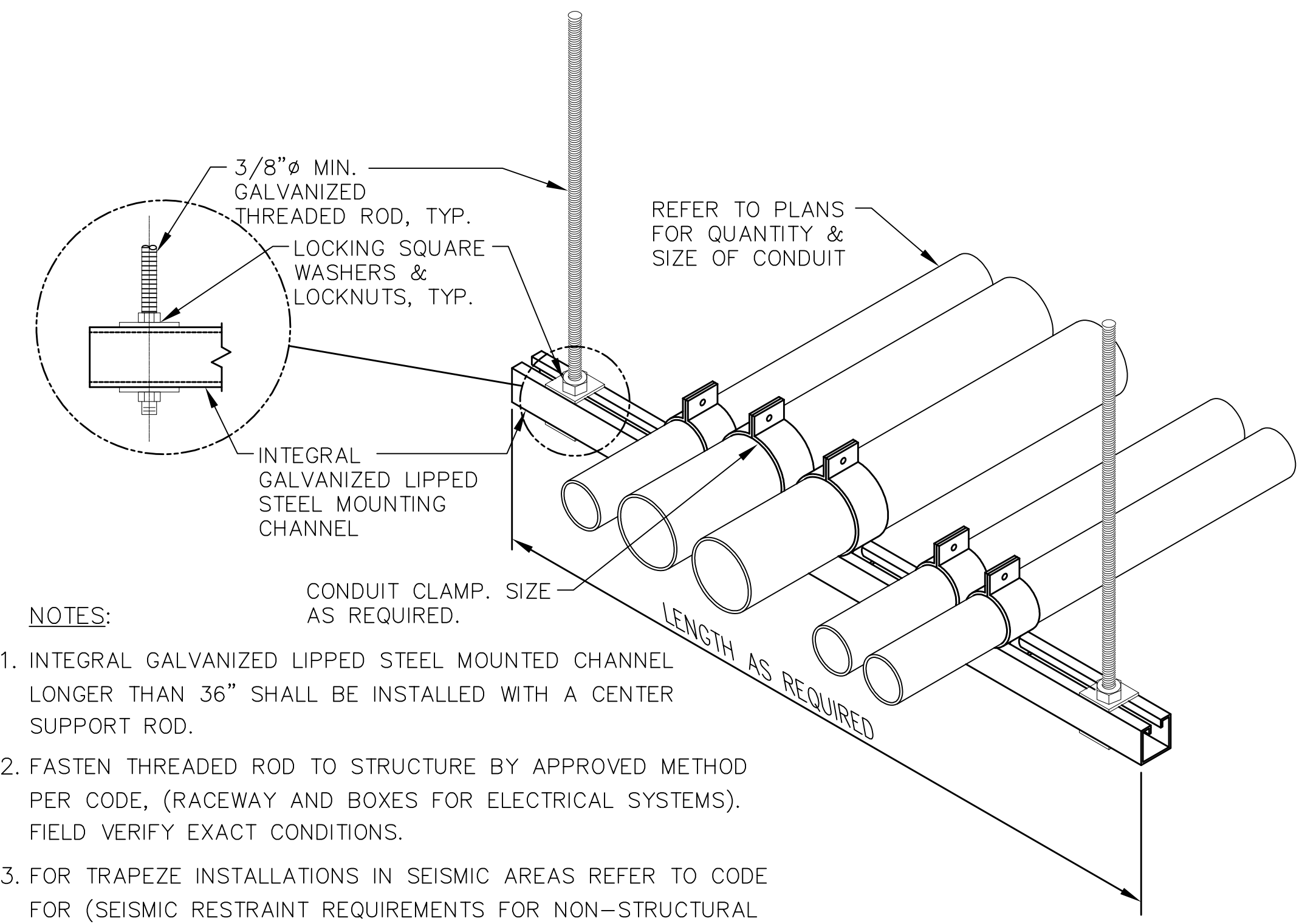


2 PANELBOARD BONDING DETAIL
SCALE: N.T.S.



3 CONDUIT SUPPORT DETAIL
SCALE: N.T.S.

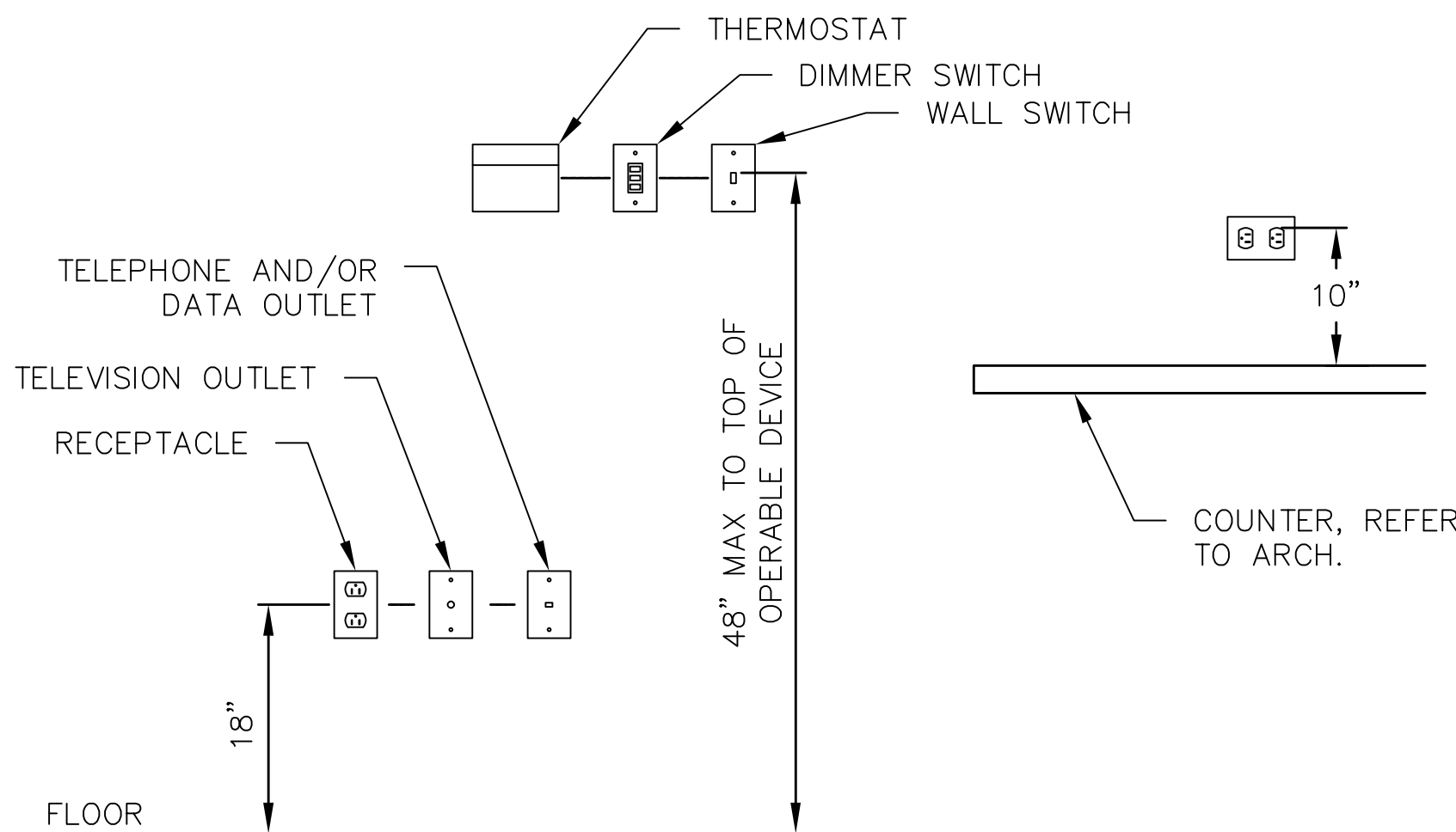
NOTES:
HANGER RODS SHALL BE OF THE SAME SIZE REQUIRED, DIAMETER PER MANUFACTURERS REQUIREMENTS, NOT SMALLER THAN 3/8"Ø.



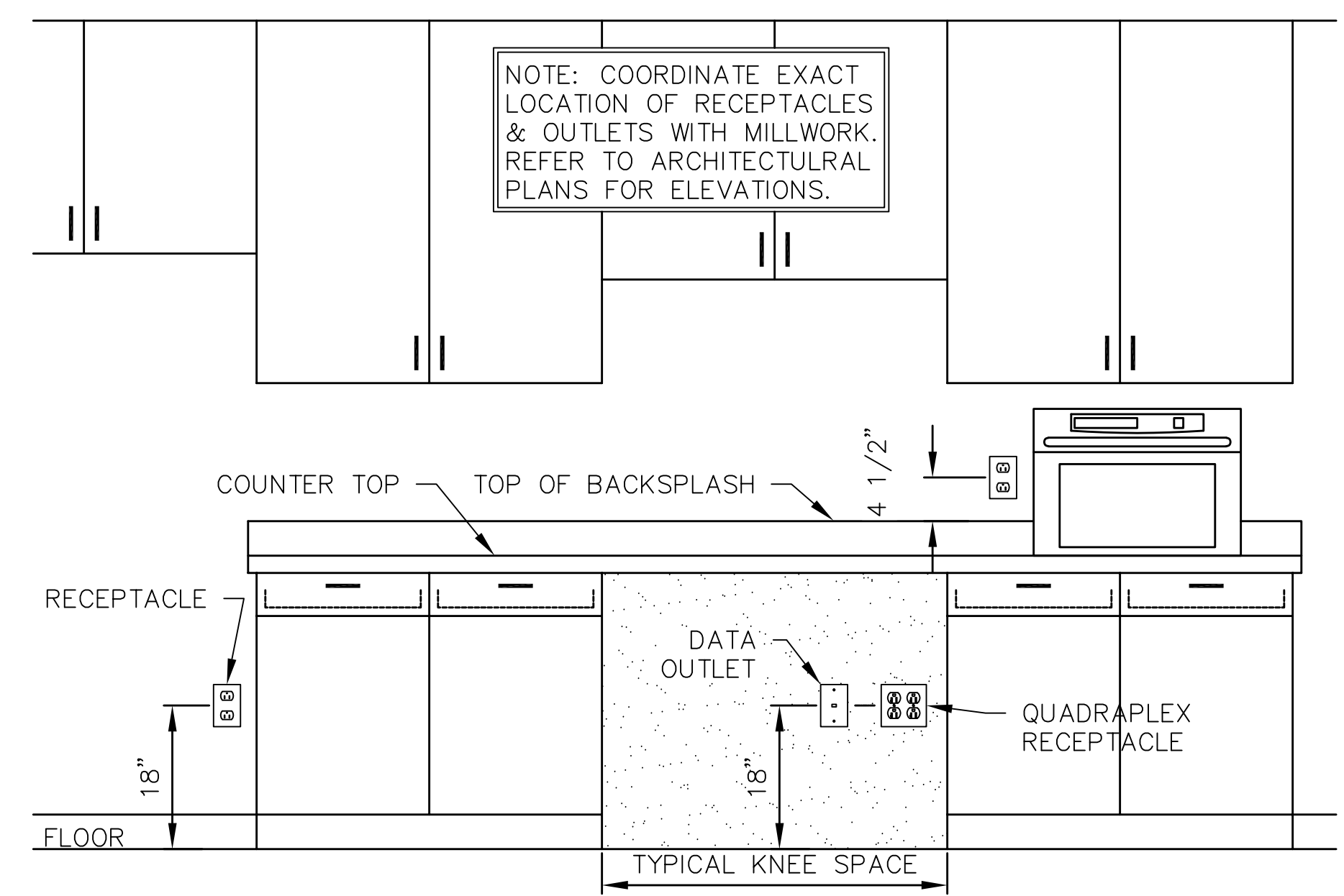
NOTES:
1. INTEGRAL GALVANIZED LIPPED STEEL MOUNTED CHANNEL LONGER THAN 36" SHALL BE INSTALLED WITH A CENTER SUPPORT ROD.
2. FASTEN THREADED ROD TO STRUCTURE BY APPROVED METHOD PER CODE, (RACEWAY AND BOXES FOR ELECTRICAL SYSTEMS). FIELD VERIFY EXACT CONDITIONS.
3. FOR TRAPEZE INSTALLATIONS IN SEISMIC AREAS REFER TO CODE FOR (SEISMIC RESTRAINT REQUIREMENTS FOR NON-STRUCTURAL COMPONENTS).

4 CONDUIT TRAPEZE MOUNTING DETAIL
SCALE: N.T.S.

NOTE:
1. MOUNT TO CONFORM TO ALL ASPECTS OF TEXAS ACCESSIBILITY STANDARDS (TAS).
2. MOUNTING HEIGHTS AS DETAILED UNLESS INDICATED OTHERWISE.
3. MOUNT TELEPHONE AND/OR COMPUTER OUTLETS SO THAT COVER PLATE WILL BE ALIGNED WITH RECEPTACLE COVER PLATE.
4. MOUNT SO THAT THE CENTERLINE OF THE SWITCHES ARE AT THE SAME HEIGHT AS THE CENTERLINE OF THE THERMOSTATS, COORDINATE WITH HVAC CONTRACTOR.



5 WIRING DEVICE INSTALLATION DETAIL
SCALE: N.T.S.



6 TYPICAL ABOVE & BELOW COUNTER DEVICE DETAIL
SCALE: N.T.S.

SE PROJECT NUMBER: 23415
PREPARED BY:
SE SAMUEL ENGINEERING
0450 E. Crescent Parkway, Suite 200
Greenwood Village, CO 80111
Phone: 303.714.4840
Fax: 303.714.4800
TX-Registered Engineering Firm No. F13934

This document is copyrighted and is an instrument of service by Samuel Engineering (SE). It was prepared solely for the Owner's/Client's use on this project only. Use, copy or disclosure of any information shown, in whole or in part, without SE's consent, is strictly prohibited, is a copyright breach and may be prosecuted. Any unauthorized reuse shall be at the sole risk of the user.

THIS DRAWING REMAINS THE PROPERTY OF THE ARCHITECT AND IS NOT TO BE USED IN ANY WAY WITHOUT HIS PERMISSION

DATE OF REVISIONS:
REV 01 FC 01/22/24

JOB NO. 23C09RAN
DRAWN BY: PL

SHEET NO. E-4

FRED B. PARKER • ARCHITECT
P.O. BOX 1016
STEPHENVILLE, TEXAS 76401
PH. (254)965-5358
FAX. (254)965-5393

PARKER & ASSOCIATES
ARCHITECTS & PLANNERS

DETAILS
MULTI-PURPOSE FACILITY FOR
RANGER COLLEGE
609 Cooper St. Ranger Tx. 76470